

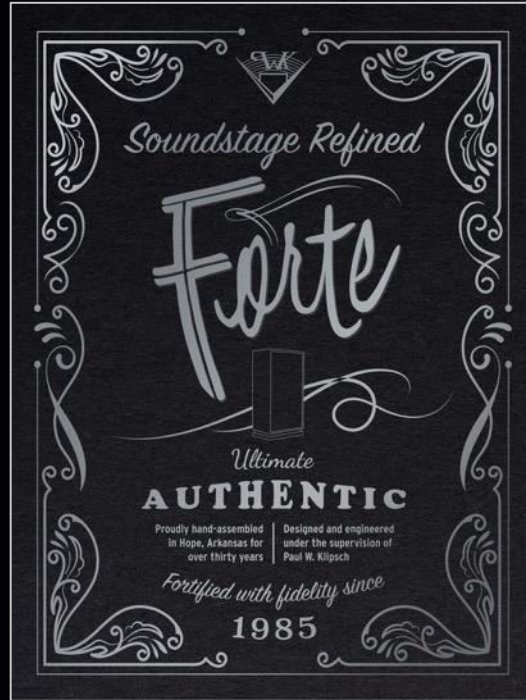
A vintage spotlite on a stand, glowing brightly against a dark background. The light fixture is metallic and has a circular lens. The background is dark with vertical lines, possibly curtains.

IN THE SPOTLIGHT

FORTE, THE STORY

FORTIFIED WITH FIDELITY

First introduced in 1985, the Forte quickly established itself as the most popular Klipsch model. The elegant design and outstanding performance makes the Forte a standout among its competitors. Hosting a three-way configuration utilizing a 12" woofer and horn-loaded midrange and tweeter, the Forte sports all new state of the art drivers for a smooth and powerful delivery. The Forte's impressive bass response is made possible through the implementation of a rear-mounted 15" passive radiator for greater output and extension.



FIRST
INTRODUCED
1985

1985

A STAR IS BORN

Press and public agree

Released in late 1985 with much fanfare, the Forte was well-received by industry publications, often garnering quite-worthy reviews and whole-hearted endorsements. Its jaw-dropping performance and brilliant sound endeared the speaker to thousands of new audiophiles.

"The speaker system has an absolutely flat response but the Forte comes pretty close to the ideal."
- Stereo Guide, January 1986

"...It sounded even better than it measured... we will have to jack them up and send them back to Hope, AR."
- Stereo Review, July 1986

A full complement of advertising materials was produced and distributed, often leading with typical Klipsch cheeky confidence and the science to back it up. Brochures detailing the Forte's acoustic benefits were created and white paper briefs were circulated to those that cared to dive deeper into the technology.

Authorized Klipsch dealers began carrying and promoting the Forte - celebrating its obtainable price, handmade in the USA pride, full-range performance and compact footprint.

Orders poured in, causing a swirl of company growth. The Klipsch factory eventually staffed three full-time shifts for a 24-hour production schedule to keep up with demand.

LAB TESTS

The room response of the Klipsch Forté was one of the widest and smoothest we have ever measured, varying only ± 2 dB from 230 to 20,000 Hz. The combined bass output of the driven and passive cones

1986

"How Big An Amp Do I Really Need?"

Clipsch's Forte is a speaker that can handle a lot of power. In fact, it can handle more than most speakers of its size. This is because of the 15" passive radiator that is mounted behind the speaker. This radiator allows the Forte to produce a lot of bass without the need for a large amplifier. So, if you're looking for a speaker that can handle a lot of power, the Forte is a great choice.

klipsch

1990

"How Come So Much?"

Speaker systems and their components are everywhere. But you don't have to be a scientist to know that things that work better are worth the extra cost. The Forte is no exception. It's a speaker that's built to last and to sound like it should. That's why it's so popular.

Speaker systems and their components are everywhere. But you don't have to be a scientist to know that things that work better are worth the extra cost. The Forte is no exception. It's a speaker that's built to last and to sound like it should. That's why it's so popular.

1989

Advertisement for the Klipsch Forte II speaker. The ad features a black and white photograph of a man looking thoughtful. To the right, there is a diagram of the speaker's internal components, including the woofer, midrange, and tweeter. Below the diagram, there are two Klipsch Forte II speakers. The text includes the headline 'How Come So Much?' and a quote from Stereo Review: '...Just what you need a bloody week!'.

klipsch forte II

Forte IV

- Three-way horn-loaded loudspeaker
- All new mid-range compression driver, mid-horn with mumps, and Tractrix® ports
- 15" woofer



AMERICAN
WALNUT



SATIN BLACK
ASH



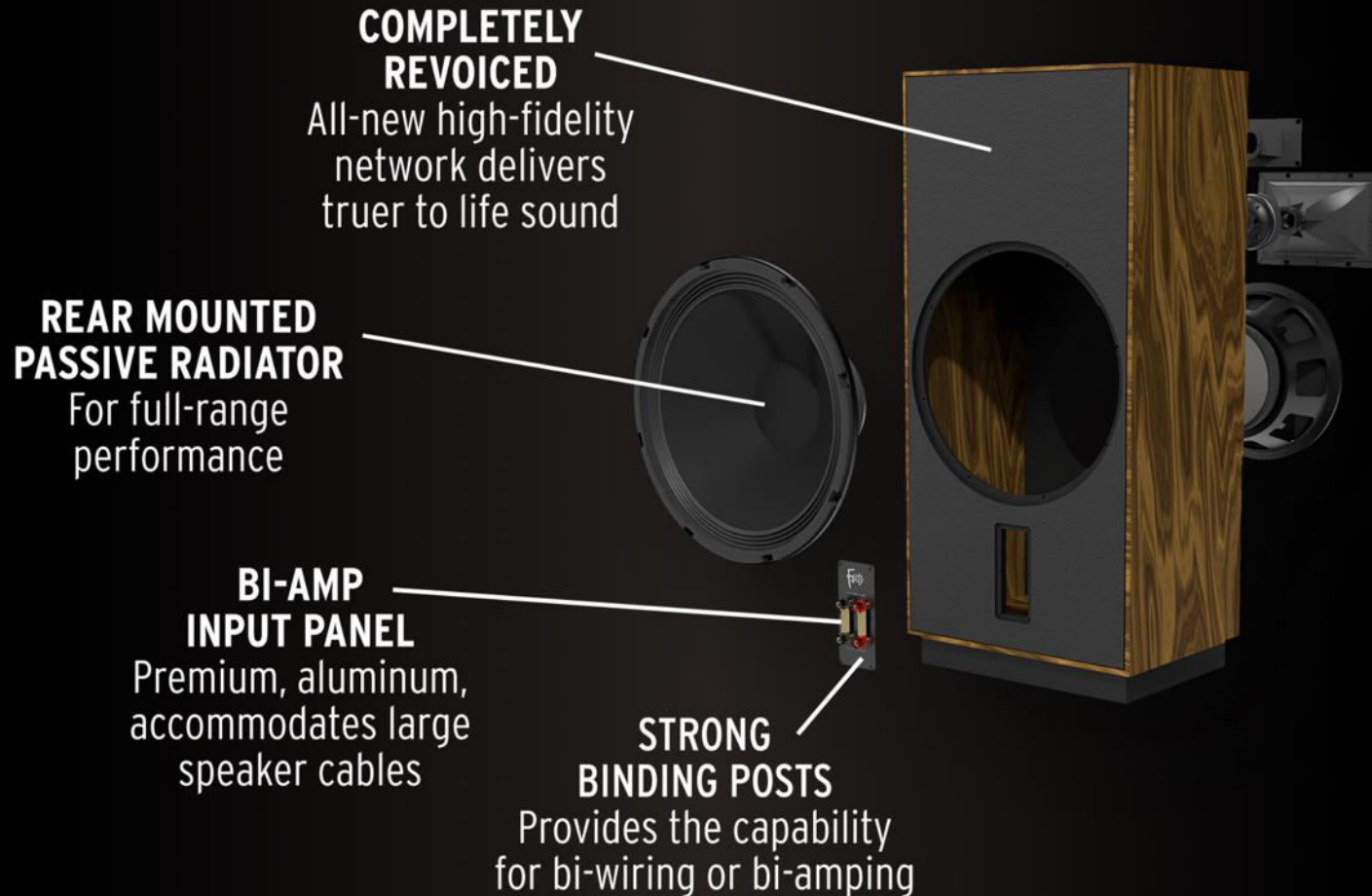
NATURAL
CHERRY



DISTRESSED
OAK



LEGENDARY TECHNOLOGY

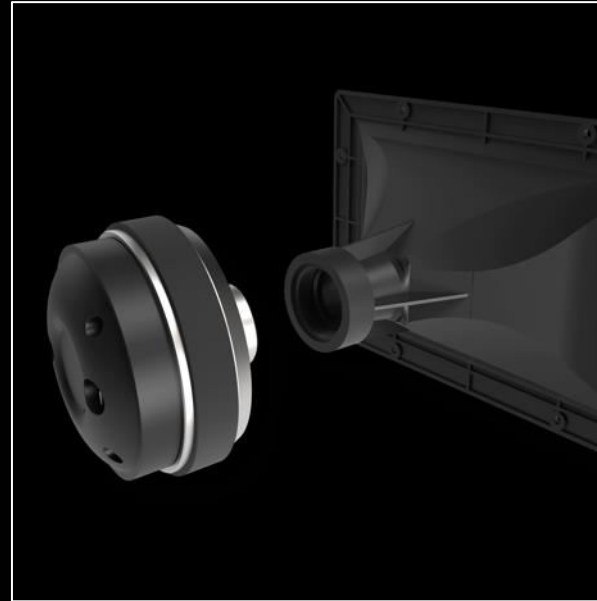


Forte IV | Acoustics

Forte



- **NEW WIDE DISPERSION HF PHASE PLUG**
- All new computer modeled mechanical design
- Wider, more even dispersion from the high frequency compression driver
- Cleaner, more even high frequencies



NEW TRACTRIX™ MIDRANGE HORN

- Modified Tractrix™ geometry
- Wider sweet spot with more detailed mid frequencies
- Smoother response throughout the listening area



NEW K-702 MIDRANGE COMPRESSION DRIVER

- 1.75" polyimide diaphragm compression driver, mated to a modified tractrix® horn provides exceptional clarity and dynamcis in the critical mid-range frequencies

Forte IV vs Forte III



	FORTE III	FORTE IV
FREQUENCY RESPONSE (+/- 3 dB)	38Hz - 20kHz	
SENSITIVITY ¹	99dB @ 2.83V / 1m	
POWER HANDLING (CONT/PEAK)	100W / 400W	
MAXIMUM SPL	116dB Continuous	
NOMINAL IMPEDANCE	8 ohms Compatible	
CROSSOVER FREQUENCY	HF: 5.2kHz / MF: 650Hz	
HIGH FREQUENCY DRIVER	K-100-TI 1" (2.54cm) Titanium diaphragm compression driver on a K-79T horn	K-100-TI 1" (2.54cm) Titanium diaphragm compression driver on a K-79T horn + new phase plug
MIDRANGE	K-70 1.75" (4.45cm) Titanium diaphragm compression driver on a K-703-M horn	K-702 1.75" (4.45cm) Polyimide Compression Driver mated to a K-703-M horn + Modified Tractrix™ geometry
LOW FREQUENCY DRIVER	K-281 12" (30.48cm) Fiber-composite cone woofer, KD-15 15" (38.1cm) Passive cone radiator	
INPUTS	Dual binding posts / bi-wire / bi-amp	Dual binding posts / bi-wire / bi-amp + all new network design
GRILLE	Black (except with distressed oak)	Metallic (except with distressed oak)
FINISH	American walnut, Natural Cherry, Black ash, Distressed oak	
FOOT	Full foot	Smaller Matte black riser